

Apr. 17, 2017

2018 No-till on the Plains Winter Conference Sponsorships

Dear Sponsors,

Excitement is building for the 2018 No-till on the Plains Winter Conference, Jan. 30-31. In its 22nd year, the conference features significant new opportunities as we move to Wichita, KS, and feature world-renowned holistic manager Allan Savory of the Savory Institute as our keynote speaker.

This year we are changing our sponsorships to provide more exclusive access to our attendees and more intimate interactions by offering a limited number of sponsorships. We certainly understand this change may not be good fit for all of our past exhibitors, but this will be a rewarding opportunity for those who choose to take advantage of the experience.

The move allows us to offer more accommodating opportunities in the Hyatt hotel and Century II facilities. By limiting the number of sponsors, you'll receive additional pre-conference and on-site exposure, as well as expanded opportunities to interact and socialize with our attendees. In addition, Tier 1 sponsors have the first-ever opportunity to present a custom breakout session during the conference.

Sponsors will also enjoy enhanced publicity through pre-conference advertising and social media. The earlier you can let us know of your commitment, the earlier we can begin to publicize your support.

As you review these opportunities, please feel free to contact us with questions. We look forward to hearing from you and seeing you in January.

Sincerely,



Steve Swaffar
Executive Director

Important Details

1. Sponsor Booth Hours

Tuesday, Jan. 30: 8 a.m. to 6:30 p.m.
Wednesday, Jan. 31: 8 a.m. to 4 p.m.

Attendees may view exhibits any time during open hours. On Jan. 30, breakout sessions begin at 10:30 a.m. There will be a 30-minute and a reception in the evening. On Jan. 31, breakouts begin at 8:30 a.m. There will be a 90-minute lunch and 30-minute afternoon break for attendee exhibitor contacts. Please see our sponsorship opportunities for breaks and lunch.

2. Move-in/Move-out

Sponsors may move in from 12 p.m. to 5 p.m. on Monday, Jan. 29. On Wednesday, Jan. 31, sponsors may pack-up and move out *after 4:30 pm*

3. Online Sponsor Registration and Contracts

Please complete your registrations and contracts at notill.org. You may complete your contact information, reserve your space, pay securely online via PayPal and order add-ons such as electricity, Internet and other necessary items all in one convenient location. This online process will expedite your registration and improve the trade show experience.

2018 Sponsor Levels

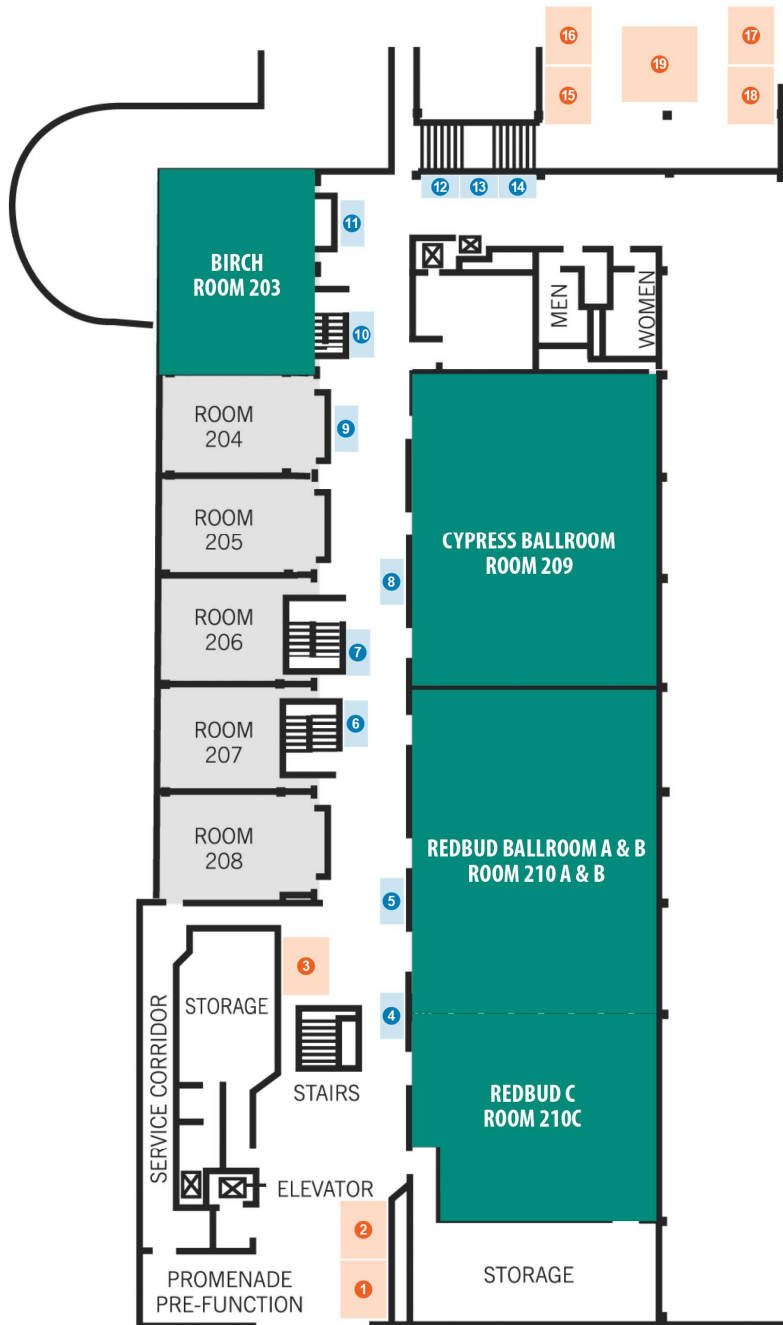
Reception, Lunch and Break Sponsorships
SOLD OUT

	TIER 1 SPONSOR	TIER 2 SPONSOR	RECEPTION SPONSOR	LUNCH SPONSOR	BREAK SPONSOR
Investment	\$15,000	\$10,000	\$3,000	\$1,500 or \$2,500 for two	\$750
# Available	7	15	1 (0 remaining)	1-2 (1 remaining)	4 (0 remaining)
Exhibit Space	Any available booth space	12'W x 6'D or 10'W x 6'D booth on promenade or lower level foyer			
Tables & Chairs	(2-3) 8' draped tables, 2 chairs, depending on booth size	(1-3) 8' draped table, 2 chairs, depending on booth size	8' foot table in room during reception	8' foot table in room during lunch	
Electricity & Internet	110V and wireless Internet included	110V and wireless Internet included			
Complimentary Registrations	10	6	2	2	2
Mailing List	Included (Name/Address only)	Included (Name/Address only)			
Conference Breakout Session	Exclusive 60-minute session during conference breakouts				
Conference Proceedings	<ul style="list-style-type: none"> Large logo and contact info in sponsor directory Full-page ad 	<ul style="list-style-type: none"> Small logo and contact info in sponsor directory Half-page ad 	<ul style="list-style-type: none"> Contact info in sponsor directory Quarter-page ad 	<ul style="list-style-type: none"> Contact info in sponsor directory Business card size ad 	<ul style="list-style-type: none"> Contact info in sponsor directory
Recognition	<ul style="list-style-type: none"> Showcased as NTOP sponsor for one year on website and at all events Logo and link on website Logo on advertising Listed in news releases Logo on on-site signage Logo featured on your own sign onstage for general sessions Logo on your own slide on jumbo screen before general sessions and breakouts One 1-minute commercial before general sessions Recognition by emcee before each general session Reserved premium seating for 8 during general sessions Sponsor spotlight email blast 5 social media mentions leading up to conference Opportunity to include one promotional piece (brochure, flyer, etc.) and one small giveaway (koozie, keychain, pen, etc.) in attendee packets 	<ul style="list-style-type: none"> Logo and link on website Logo on jumbo screen (shared) before general sessions and breakouts 2 social media mentions leading up to conference Opportunity to include brochure or flyer in attendee packets Reserved premium seating for 8 during general sessions 	<ul style="list-style-type: none"> Logo on schedule Logo on on-site signage in reception area Logo on reception table tents Opportunity to place promotional information and items on tables 	<ul style="list-style-type: none"> Logo on schedule Logo on on-site signage in lunch area Logo on lunch table tents Opportunity to place promotional information and items on tables 	<ul style="list-style-type: none"> Logo on schedule Logo on on-site signage in break area Opportunity to place promotional information and items on tables

Sponsor Booth Locations (Upper Level)

To view the most current map of available spaces, visit <http://notill.org/conference/2018-sponsor-information>.

General Sessions Century II

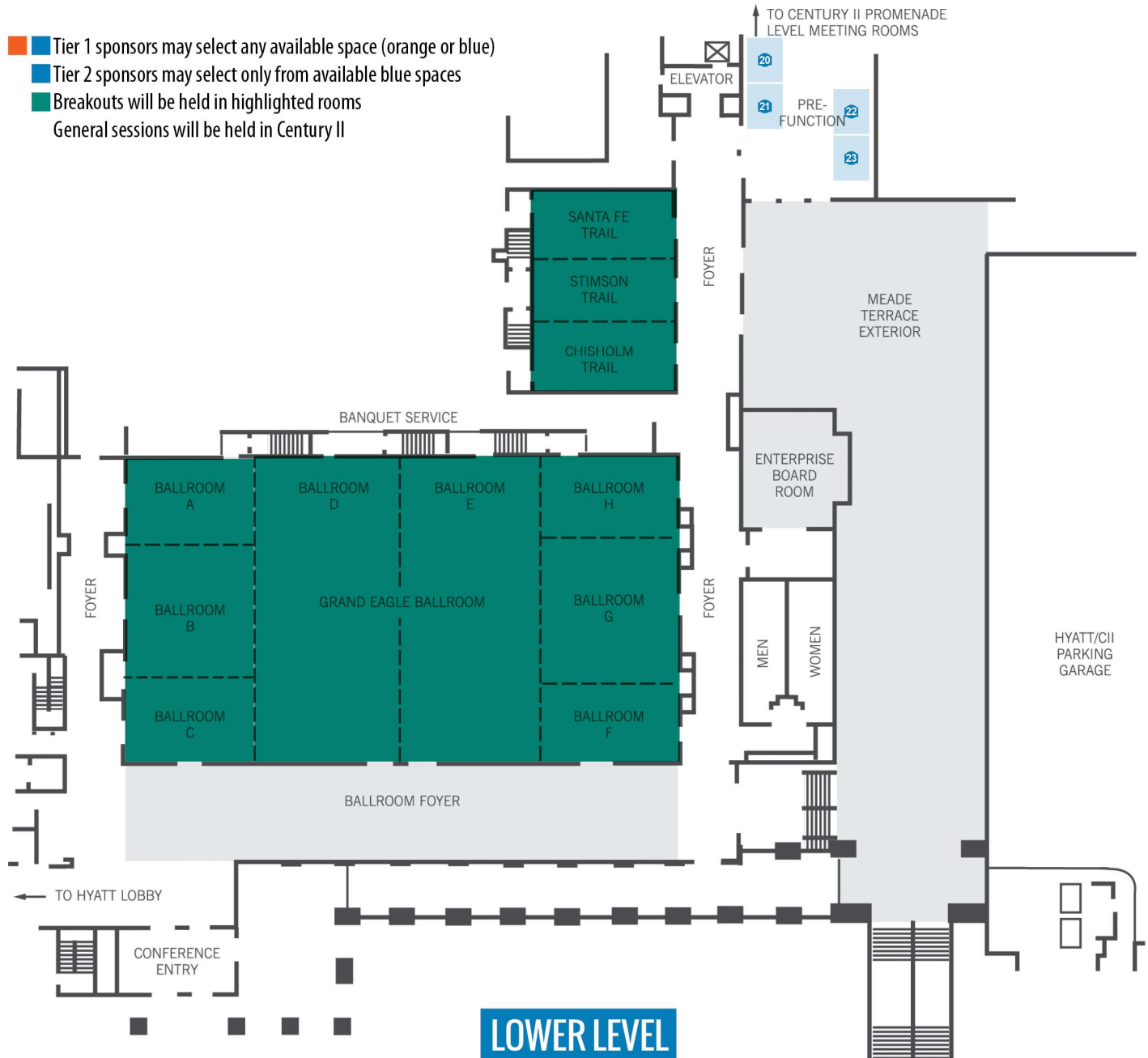


UPPER LEVEL

Sponsor Booth Locations (Lower Level)

To view the most current map of available spaces, visit <http://notill.org/conference/2018-sponsor-information>.

- Tier 1 sponsors may select any available space (orange or blue)
- Tier 2 sponsors may select only from available blue spaces
- Breakouts will be held in highlighted rooms
General sessions will be held in Century II



Upper Gallery

(2) 12'x15' spaces available to Tier 1 Sponsors (spaces 1-2)



Promenade

(8) 12'w x 6'd spaces available to Tier 1 and Tier 2 Sponsors (spaces 3-4, 6-11)

(1) 15'w x 15'd space available to Tier 1 Sponsors (space 5)



Promenade Connecting Lobby

(3) 10'w x 6'd spaces available to Tier 1 and Tier 2 Sponsors (spaces 12-14)

(4) 15'w x 12'd spaces available to Tier 1 and Tier 2 Sponsors (space 15-18)

(1) 20'w x 20'd space available to Tier 1 Sponsors (space 19)



Lower Gallery

(4) 12'x15' spaces available to Tier 1 and Tier 2 Sponsors (spaces 20-23)



Parking

A number of free parking areas are available, as indicated on the map below.



Sponsor Checklist

Submit your contract and payment online at notill.org. Sponsor booth locations are first-come, first-serve. Your space is not secured until payment is received. Pay securely online via PayPal during registration or mail a check as soon as possible to No-till on the Plains, P.O. Box 81, Berryton, KS 66409.

	TIER 1 SPONSOR	TIER 2 SPONSOR	RECEPTION SPONSOR	LUNCH SPONSOR	BREAK SPONSOR
Email print-ready advertisement (PDF or JPG)	Dec. 1 Ad size: WITHOUT BLEED: 8" wide by 10.5" tall, WITH BLEED: 8.75" wide by 11.25" (Keep text within safe space of 8.25" by 10.75", includes .125" on each edge for bleed)	By Dec. 1 Ad size: 7.5" wide by 4.875" tall	By Dec. 1 Ad size: 3.625" wide by 4.875" tall	By Dec. 1 Ad size: 3.625" wide by 2.3" tall	
Submit commercial	By Dec. 15 1-min. commercial				
Email breakout session presentation	By Jan. 19				
Email list of employee names for conference badges	By Jan. 10 (10 badges)	By Jan. 10 (6 badges)	By Jan. 10 (2 badges)	By Jan. 10 (2 badges)	By Jan. 10 (2 badges)

Sponsor Agreement

We hereby make application for sponsorship according to the official floor plan to be used for an exhibit at the No-till on the Plains, Inc. Winter Conference at the Hyatt Regency and Century II on Jan. 30-31, 2018, to be conducted by the No-till on the Plains, Inc. All sponsor rules and information governing the No-till on the Plains, Inc. Winter Conference are accepted by us, and made part of this contract, and we agree to comply with all of them, taking the space for exhibition purposes under the terms and conditions set forth below.

Exhibit Hours

- Monday, Jan. 29: Sponsor move-in as scheduled; registration check-in required
- Tuesday, Jan. 30: 8 a.m. to 6:30 p.m. (Facility open at 7:30 a.m.)
- Wednesday, Jan. 31: 8 a.m. to 4 p.m.

Move-in/Move-out

- Move-in Center opens Monday, Jan. 30, at 12 p.m. for scheduled move-in and closes at 5 p.m. sharp.
- Handicapped areas and sidewalks are absolutely off limits for loading/unloading.
- All booth spaces will be pre-marked to ease with set-up.
- On Wednesday, Jan. 31, sponsors may pack-up and move out only after 4:30 p.m. All displays must be removed by 8 p.m., Jan. 31.

Name Badge Policies

Name badges must be worn during the entire show. A name badge must be purchased for each person working the exhibit and may not be exchanged between sponsor representatives working different days.

Sponsor Packets and Check-in

Sponsor packets containing show information and name badges must be picked up at the appropriate registration area (Monday).

Booth Furnishings

- Refer to the sponsorship table in the sponsorship packet for included booth furnishings. For additional needs, please contact No-till on the Plains at (785) 210-4525.
- Electricity and wireless Internet is available throughout the Hyatt Regency and included for sponsors. Bring your own extension cord.
- All items on display must lie within the four boundaries of the assigned exhibit area.

Cancellation Policy


Cancellation of this contract will be granted if No-till on the Plains, Inc. is notified in writing. Exhibitors will be charged a 25% fee for cancellation prior to Dec. 31, 2017. The lessee will be held responsible for the entire rental fee after Jan. 1, 2018.

Liability

It is expressly understood and agreed between the sponsor and No-till on the Plains, Inc. that No-till on the Plains, Inc., its members, and the Hyatt Regency and Century II will not be held responsible for any loss of, or damage to, goods and property of sponsors and sponsors' employees. Each sponsor, upon signing a contract/application for space, expressly releases No-till on the Plains, Inc. from, and agrees to indemnify them against all claims.



 [notillorg](https://twitter.com/notillorg)
[#notill2018](https://twitter.com/notill2018)

 [NoTillOnThePlains](https://www.facebook.com/NoTillOnThePlains)
www.notill.org

2018 WINTER CONFERENCE

JAN. 30-31, 2018 • WICHITA, KANSAS

ONLINE SPONSOR REGISTRATION AT NOTILL.ORG
QUESTIONS? Email events@notill.org or call (785) 210-4525

Contract Acceptance

When this contract is accepted, No-till on the Plains, Inc. agrees to give us the use of the space, to be used by us in consideration of and for the purpose and time aforesaid. No-till on the Plains, Inc. agrees to the terms herein stated, and to the terms and conditions set forth above.